



## Hospitals and EMS

StatusNet911 is a collaborative dashboard used by hospital EDs and EMS to share critical information about active EMS and available medical resources.

## Mental Health Facilities

For patients that need mental health services, StatusNet911 provides status of available mental health facilities.

## Drug Rehabilitation Centers

For patients with substance abuse issues, StatusNet911 provides status of available drug rehabilitation centers.

## Clinics and Urgent Care Centers

StatusNet911 provides status of available clinics and urgent care centers that may be more suitable for treatment of minor injuries and illnesses.

## Ambulance Drop Times

StatusNet911 calculates and updates ambulance drop-times at hospitals to inform EMS dispatch or an MCI coordinator of hospital load so response units can be rerouted as necessary.

## Hospital Status Information

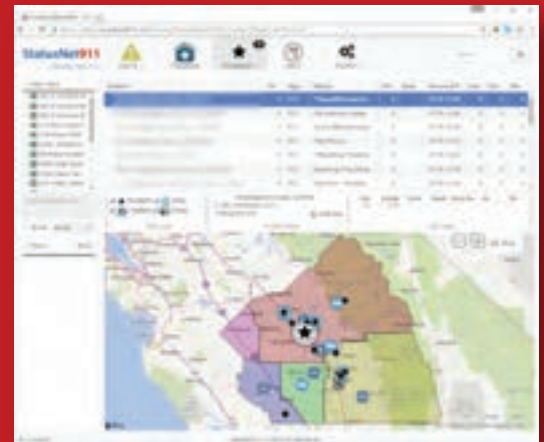
By reporting, monitoring, and alerting on the availability of specialized equipment, StatusNet911 improves patient outcomes by ensuring effective dispatch and proper patient allocation.

## Improved Stroke & STEMI Response

Pre-arrival notifications allow EDs to prepare necessary resources and physicians for inbound Stroke, STEMI, and trauma patients.

## Auditing & Reporting

StatusNet911 provides a full-featured reporting and auditing service. Users with proper permissions can generate summary reports for MCIs, hospital turnaround time reports, and facility audit reports.



*"StatusNet911 is one of the most important tools in our EMS System. We depend on StatusNet911 to send critical information to hospitals, maintain real-time status of hospitals, and to assist in the management of multi-casualty incidents."*

*Daniel Lynch, EMS Director  
Central California EMS Agency*

StatusNet911 is a cloud-based dashboard connecting hospital, dispatch, and first responders with real-time situational data. It provides hospital resource availability, triage status, and system outages to support real-time response to multi/mass-casualty incidents (MCIs) and daily incident traffic. Health systems benefit by receiving Emergency Medical Services (EMS) incident information in real-time to more effectively manage facility resources. StatusNet911 promotes disaster preparedness by providing value for emergency patient care daily.

# DATA TECH 911



## Alerting

Alerts are sent when hospital status changes based on patient load or equipment availability. Be On the Look Out (BOLOs), All Calls, and MCI activity alerts are provided through the alert service.

High priority alerts require acknowledgment and/or response data — responses are audited.

## System

- Secure cloud-based server with Microsoft HIPAA and HITECH BAA
- Secure real-time data access
- Broadcast individual, team, local, regional, and state-wide alerts and communications
- Integrates with Computer Aided Dispatch (CAD)
- In-app feedback feature to report issues and request new features
- Independent training platform available

## Mass Casualty Incident Management

When a Mass Casualty Incident (MCI) or disaster is declared, StatusNet911 alerts and shares disaster data to all StatusNet911 facilities and requests hospital triage status updates. An MCI Coordinator uses this information to route response units to the best hospital for individual patient needs and hospitals receive patient information before the patient arrives in the ER.



## Get Your Team Out In Front of MCIs

